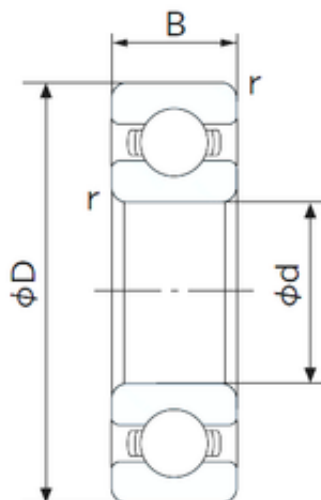




China 6202 Bearing Supplier



SKF Timken Snr NTN NACHI 6000 6001 6002
 6003 6004 6005 6006 6007 6008 6009 6010 6011
 6012 6013 6014 6015 6016 6017 6018 6019
 6020zz/RS Deep Groove Ball Bearing

Bearing No. 6000

Size	10x26x8 mm
Bore Diameter	10 mm
Outer Diameter	26 mm
Width	8 mm
d	10 mm
D	26 mm
B	8 mm
C	8 mm
r min.	0.3 mm
da min.	12 mm
Da max.	24 mm
ra max.	0.3 mm
Weight	0.019 Kg
Basic dynamic load rating (C)	4,55 kN
Basic static load rating (C0)	1,97 kN
(Grease) Lubrication Speed	30000 r/min
Enclosure	Open
Bore Type	Cylindrical Bore
Configuration	Single Row
Bore Size	10 mm
Outside Diameter	26 mm
Width	8 mm
Fillet Radius/Chamfer	0.3 mm

6000 Bearing 2D drawings and 3D CAD models



China 6202 Bearing Supplier

Dynamic Load Rating	4,550 N
Static Load Rating	1,970 N
Limiting Speed - Grease	30,000 rpm
Limiting Speed - Oil	36,000 rpm
Factor f_0	12.4
Radial Clearance	0.002 to 0.013 mm
d_a (min)	12 mm
D_a (max)	24 mm
r_a (max)	0.3 mm